



# Fournier Industries Products Overview

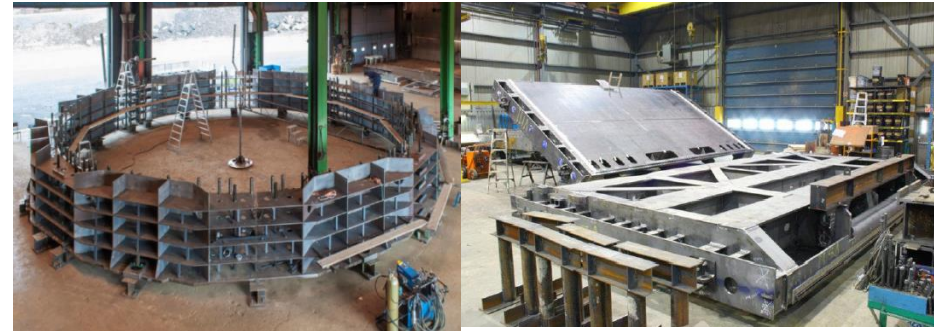
## Mining:

Leach Tanks  
Process Tanks  
Plate Works  
Hoppers ...



## Hydroelectricity:

Gates,  
Stator Frames,  
Servomotors



## Industrial & Institutional:


Ship Loading,  
Custom Equipment,  
Biomass Furnace,  
Rotary Press  
Filter Press



**Specialists in Complete  
Turnkey projects**

# Improve dewatering quality and reduce your cost

## FULLAUTO FILTER PRESS




- Operated 24 hours a day without operator intervention
- High Dryness (30-96%)
- Simple, robust and reliable
- The most advanced Filter press



More than  
**1000**  
installations

[www.filter-press.ca](http://www.filter-press.ca)



**FAURE**  
EQUIPEMENTS

Technology Partner

## ROTARY PRESS





More than  
**500**  
installations

- High cake dryness
- Clean and easy to operate
- Fully automated
- Extensible

[www.rotary-press.com](http://www.rotary-press.com)

Mining Application - Filtration processes - Industrial sludge - Sludge from WWTP - Septic sludge - Paper sludge - Biomethanisation sludge

3787, boul. Frontenac Ouest, Thetford Mines (Québec) Canada G6H 2B5  
 418 423-4241 | [general@fournierindustries.com](mailto:general@fournierindustries.com) | [fournierindustries.com](http://fournierindustries.com)

# Fournier Rotary Press – How does it work ?



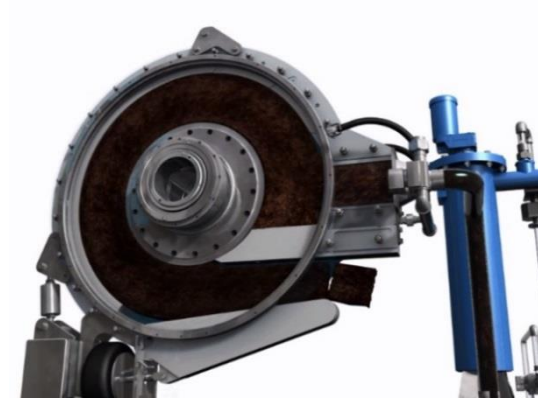


# Fournier Rotary Press – Typical Installation

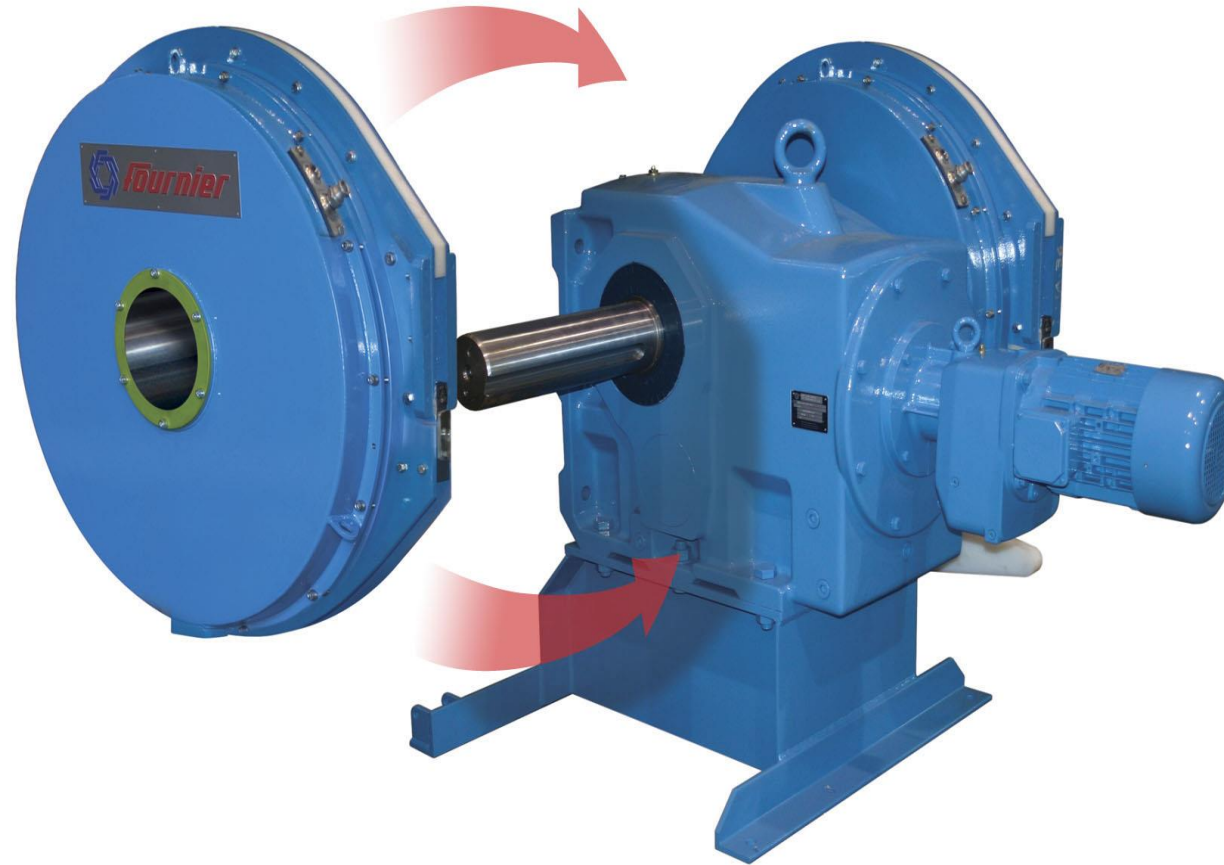


# Advantages of operation

- Continuous process
- Equipment totally enclosed reducing airborne contaminants & odor
- Easy start-up and shutdown procedures
- Simple to operate
- Minimal supervision required
- Wide range of sludge concentration from 0.7 to 10 % TS and self adjustment
- Completely automated and can be remotely operated
- **Expandability for your future dewatering needs...**



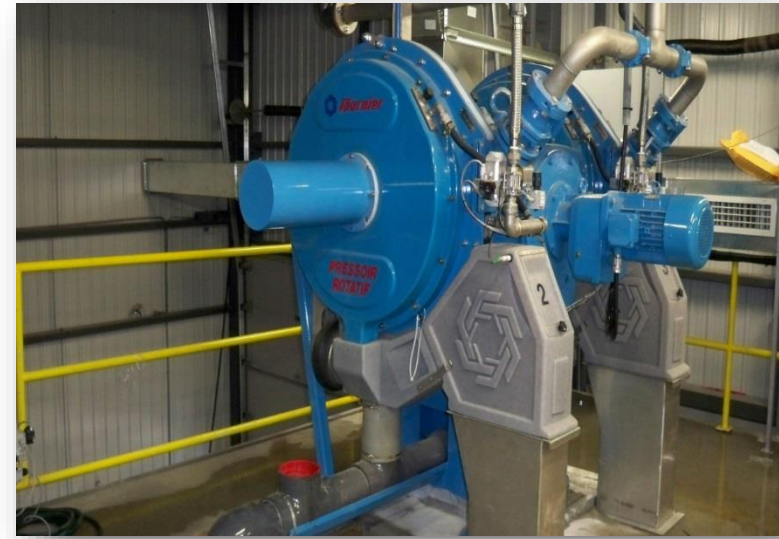
# Fournier Rotary Press - Expandable units



**To better suit tomorrow's needs! - All configurations are possible from 1 to 8 channels**

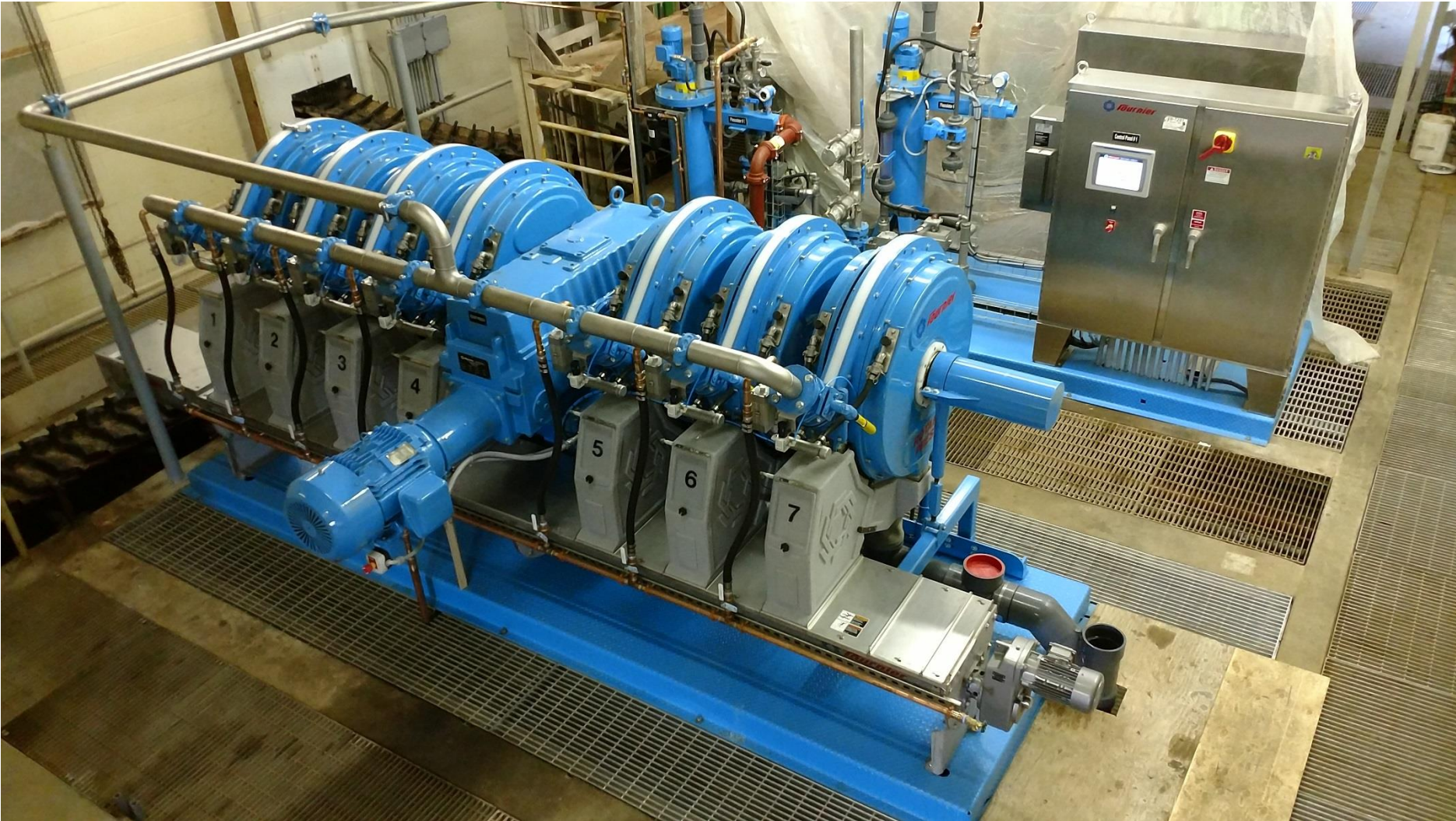


Available in different configurations



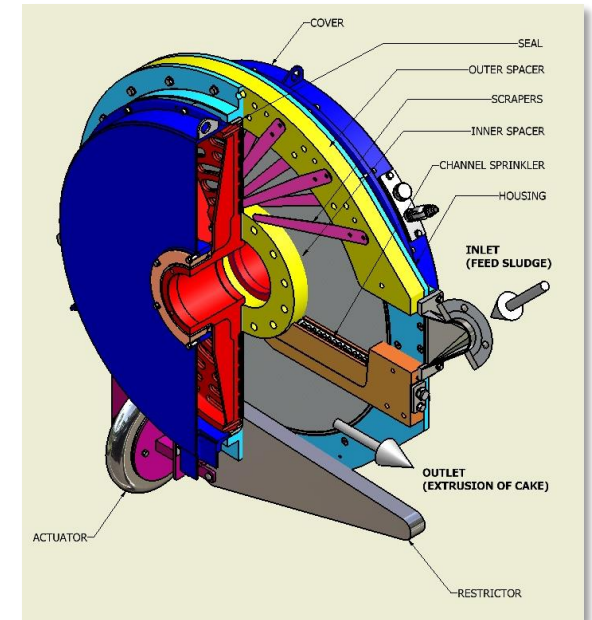


# Up to 8-channel unit



# Maintenance

- Simple maintenance can be performed by your operator
- Robust construction
- Few mechanical parts
- Slow rotation speed (0.2 to 2 rpm)
- Completely enclosed unit reducing corrosive exposure to nearby equipment
- Automated self-cleaning cycle
- Affordable to operate and maintain





# Economy



- Savings on final disposal costs (High Cake Dryness)
- Minimal space requirements (Small Footprint)
- Low maintenance costs
- Reduced labour costs
- Low energy consumption
- Low water usage (1 m<sup>3</sup>/channel per 24 hours of operation)
- High capture rate minimizing return of biosolids to head of the plan





# Municipal Applications

- Primary Sludge
- Biological Sludge and Activated Sludge
  - Aerobically digested sludge
  - Anaerobically digested sludge
  - Oxidation Ditch
  - SBR
  - MBR and MBBR
  - And other – Ask for your application to our experienced team !
- Mixed Sludge
- Biogas plant effluent sludge (Biomethanisation Digestate)
- Septage Sludge (directly from vacuum trucks)

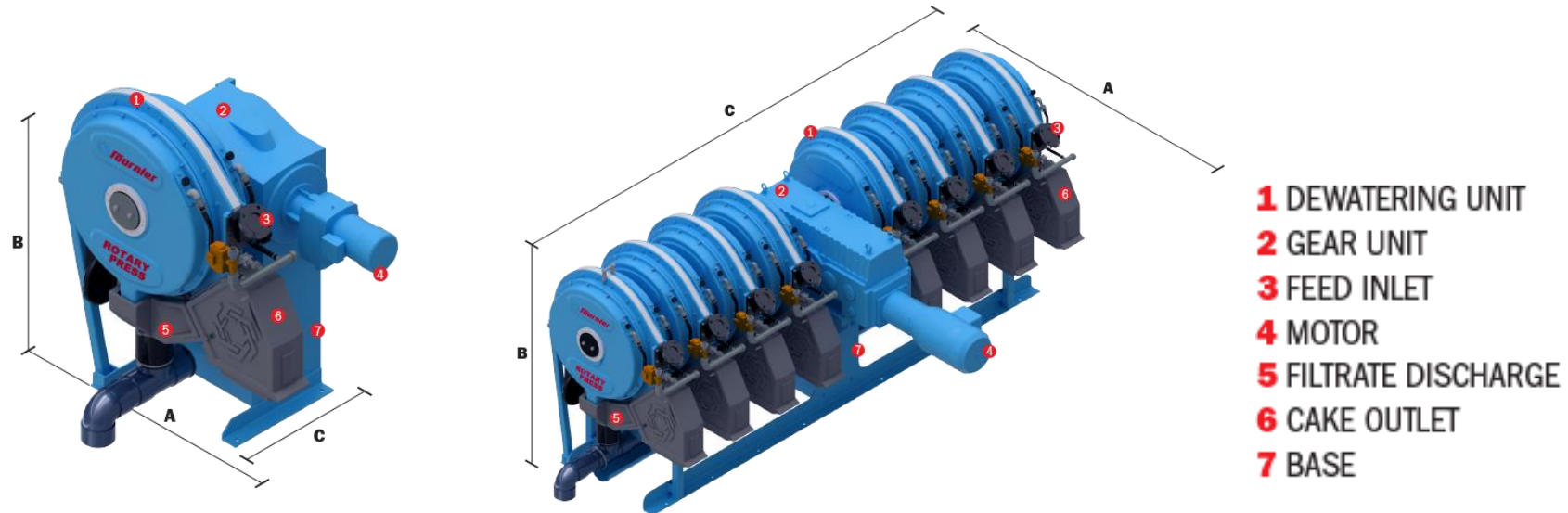


# Industrial Applications

- Pulp and Paper Effluent Sludge
- Brewery Effluent Sludge
- Agricultural Manure (Pig, Cow, etc.)
- Food Process Effluent (Slaughterhouse, Milk process)
- Biofuel plant
- Bagasse plant
- Plastic recycling plant effluent
- Tannery Effluent Sludge
- And more – Contact us with your application!



# Rotary Press Specifications



Model No.	Model Channel	Dimensions (inches / mm)			Weight lb (kg)	Motor HP (kW)
		A	B	C		
1-900/1000CV	1	70.3" (1785 mm)	72.0" (1830 mm)	40.5" (1028 mm)	3966 lb (1799 kg)	5 HP (3.7 kW)
2-900/2000CV	2	77.5" (1969 mm)	72.0" (1830 mm)	64.8" (1646 mm)	6854 lb (3109 kg)	7.5 HP (5.6 kW)
3-900/3000CV	3	79.0" (2007 mm)	72.0" (1830 mm)	85.8" (2180 mm)	8498 lb (3855 kg)	10 HP (7.5 kW)
4-900/4000CV	4	91.3" (2320 mm)	75.4" (1915 mm)	101.6" (2580 mm)	10280 lb (4663 kg)	15 HP (11.1 kW)
5-900/5000CV	5	92.8" (2358 mm)	75.4" (1915 mm)	123.0" (3124 mm)	12235 lb (5550 kg)	20 HP (15.0 kW)
6-900/6000CV	6	92.8" (2358 mm)	75.4" (1915 mm)	144.4" (3668 mm)	13649 lb (6191 kg)	20 HP (15.0 kW)
7-900/7000CV	7	94" (2388 mm)	79" (2007 mm)	176" (4471 mm)	17409 lb (7913 kg)	25 HP (22.5 kW)
8-900/8000CV	8	94" (2388 mm)	79" (2007 mm)	187" (4750 mm)	18820 lb (8555 kg)	25 HP (22.5 kW)
* Varies as per installation layout						













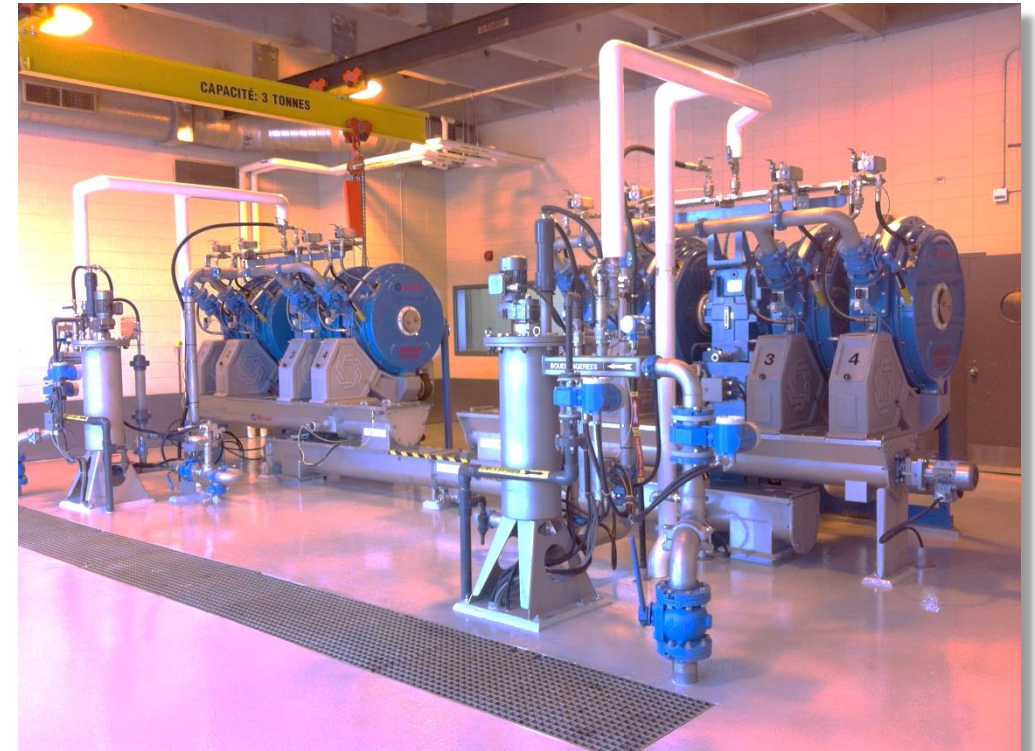




# Case Study #1 – Municipal WTPP with Biogas plant

## City of Repentigny WWTP, QC, Canada

- **Process:** Primary anaerobically digested sludge (25-30 days)
  - **Plant capacity:** 25 ML/day or 6,7 MGD
  - **Rotary Press:** 2 units  
**Model:** 4-900/4000CV  
**Commissioned:** 1995 & 2015
  - **Performances:**
    - Feed concentration: 2-4 % TS
    - Throughput: 6.7 t/d/press (24 hrs)
    - Capture rate: 96 % TSS
    - Cake dryness: 32 % TS
- Special features:** Night operations completely automated (without operators)



# Case Study #2 – Biogaz plant

## Rivière-du-Loup Biogaz plant, QC, Canada

- **Process:** Anaerobic digestion of Organic Residual Material (ORM)  
(Biomethanisation Digestate)

- **Rotary Press:** 1 Unit

**Model:** 6-900/6000CV

**Commissioned:** 2015

- **Performances:**

- Feed concentration: 5 % TS

- Throughput: 9.6 dry t/d (8hrs)

- Cake dryness: 28 to 36 % TS

- Capture rate: 97 % TSS

- **Two of the largest Biogas plants in construction in Québec will be equipped with the Fournier Rotary Press. Contact us for additional details !**





# Case Study #3 – Septage sludge station

## Neuville, QC, Canada

- **Process:** Septic sludge (directly from vacuum truck)
- **Rotary Press:** 1 Unit  
**Model:** 3-900/3000CV  
**Commissioned:** 2012
- **Performances:**
  - Feed concentration: 2-3 % TS
  - Throughput: 4.8 dry t/d (8hrs)
  - Cake dryness: 38 to 42 % TS
  - Capture rate: 96 % TSS



# Case Study #4 – Municipal WWTP Mixed sludge

## Glasgow, KY, USA

- **Process:** Two treatment sources from aerobic and anaerobic digesters
- **Rotary Press:** 1 Unit  
**Model:** 6-900/6000CV  
**Commissioned:** 2011
- **Performances:**
  - Feed concentration: 2 % TS
  - Throughput: 2 to 4 dry t/d (8hrs)
  - Cake dryness: 18-30 % TS
  - Capture rate: 97 % TSS
- **Special Features:** Progressive cavity pump is used for pumping cake after shaftless conveyor



# Case Study #5 – Brewery Effluent

## InBev – Anheuser-Busch – Los Angeles, CA

- **Process:** Brewery sludge (WAS and DAF)
- **Rotary Press:** 1 Unit  
**Model:** 6-900/6000CV  
**Commissioned:** 2016
- **Performances:**
  - Feed concentration: 4.6 % TS
  - Throughput: 3.3 dry t/d (8hrs)
  - Cake dryness: 22 % TS
  - Capture rate: 96.4 % TSS





# Case Study #6 – Pulp and Paper Effluent

## Northwood Tissue, Lancaster UK

- **Process:** Pulp and Paper Deinking/recycle plant
- **Rotary Press:** 1 Unit  
**Model:** 6-900/3000CVP-304SS  
**Commissioned:** 2017
- **Performances:**
  - Feed concentration: 1-3 % TS
  - Throughput: 28 t/d
  - Cake dryness: 48-52 % TS
  - Capture rate: 98 % TSS



# Case Study #7 – Municipal WWTP 100% Biological Alexandria Borough, PA - USA

- **Process:** Aerobic digested sludge
- **Rotary Press:** 1 Unit  
**Model:** 2-900/2000CV  
**Commissioned:** 2012
- **Performances:**
  - Feed concentration: 3 % TS
  - Throughput: 1 dry t/d (8hrs)
  - Cake dryness: 16-21 % TS
  - Capture rate: 95 % TSS



# Case Study #8 – Car manufacturing Effluent

## Flint, MI - USA

- **Process:** Car processing residual waste
- **Rotary Press:** 1 Unit  
**Model:** 2(3)-900/3000CV  
**Commissioned:** 2010
- **Performances:**
  - Feed concentration: 4 % TS
  - Throughput: 1.5 dry t/d (8hrs)
  - Cake dryness: 18% TS
  - Capture rate: 98% TSS

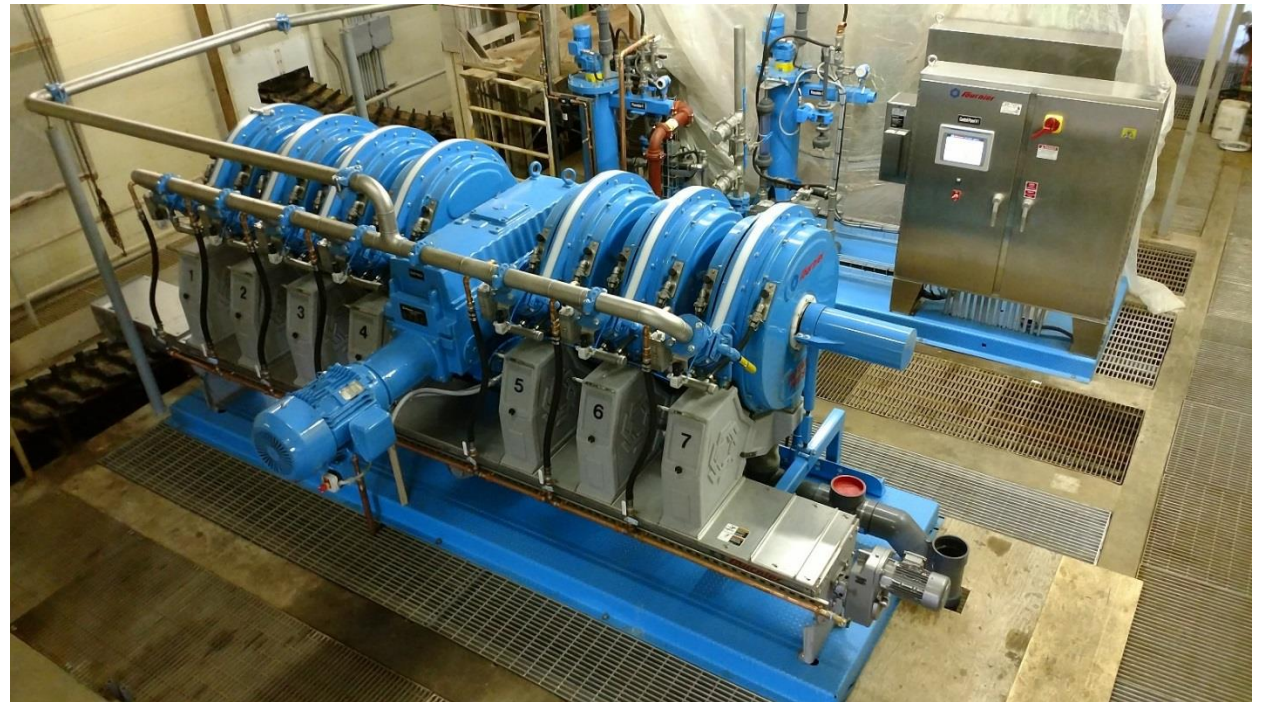




# Case Study #9 – Municipal WTPP with Industrial Effluent

## Becker, MN - USA

- **Process:** Industrial and Domestic sludge WAS
- **Rotary Press:** 2 Units  
**Model:** 7(8)-900/8000CV  
**Commissioned:** 2017
- **Performances:**
  - **Feed concentration:** 1.20 % TS
  - **Throughput:** 4.4 dry t/d (8hrs)
  - **Cake dryness:** 39 % TS
  - **Capture rate:** 99 % TSS



# THE UNIQUE 100% AUTOMATED FILTER PRESS

## FULLAUTO FILTER PRESS

- Fournier Industries is proud to partner with :



a European leader in Filter press

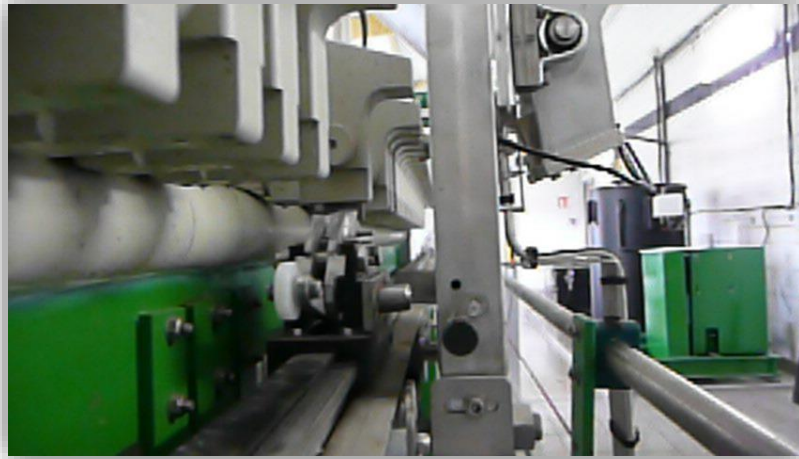
- We are the only company to offer this 100% automated technology on the market





# THE UNIQUE 100% AUTOMATED FILTER PRESS

## FULLAUTO FILTER PRESS



Auto control cake discharge by means of plate weighing

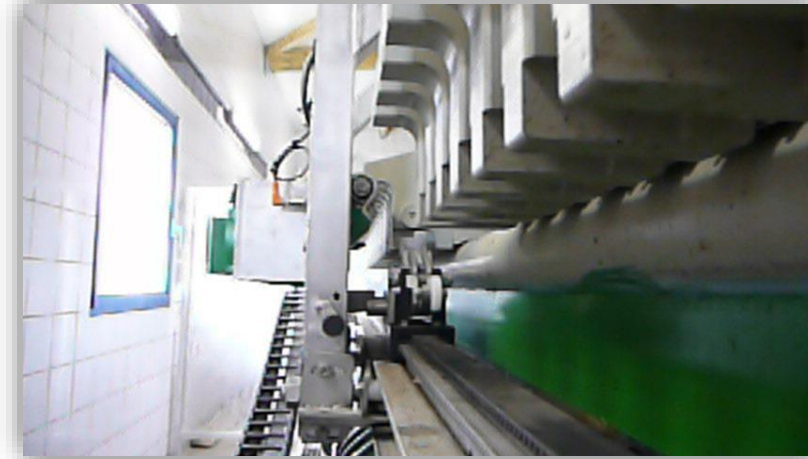


Plate shaking





# The Highest Cake Dryness Possible from 30% to 85%



Examples of performance (cake dryness):

Mining and quarries: 85%

Metal hydroxide: 40%

Drinking water: 35-50%

Waster water plant (biological sludge): 28-38%

Dairy: 30-35%

# Full scale mobile piloting units to test your application



Containerised units are also available for sale | These types of units are Plug & Go mobile unit















# Sizing and Guaranteed results with our laboratory analyses and trials

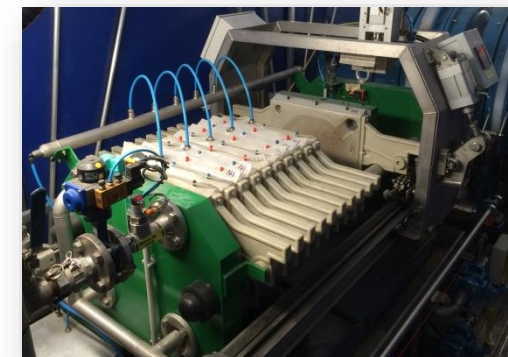
Every project starts in our laboratory

## Laboratory Trials



What happens in the lab  
will happen on site!

## On Site Trials





# Auxiliary equipment

## Shaftless Conveyor system



Midwest City, OK



Saco, ME



Campor Environnement, QC



Neuville, QC



Mont-Laurier, QC

# Liquid and dry polymer system





# COMPLETE SOLUTIONS FOR WATER POLLUTION

Equipment for oil spill reponse  
*Equipos para combate a derrames de hidrocarburos*

Equipment and systems for water and wastewater treatment  
*Equipos y sistemas para tratamiento de agua y aguas residuales*

Pumping systems and lowering of water table  
*Sistemas de bombeo y descenso del nivel freático*

Valves and pumps  
*Válvulas y bombas*

Soil remediation  
*Remediación de suelos*

Industrial solutions  
*Soluciones industriales*

Training programmes  
*Entrenamientos*

Maintenance and technical assistance corporate structure  
*Estructura propia de mantenimiento y asistencia técnica*

Logistics corporate structure  
*Estructura propia de logística*

Equipment rental  
*Alquiler de equipos*

Environmental emergencies response  
*Atención a emergencias ambientales*

Energy efficiency  
*Eficiencia energética*

Port operations  
*Operaciones portuales*

Ballast water treatment  
*Tratamiento de agua de lastre*

Water desalination  
*Desalinización del agua*

Environmental technical studies  
*Estudios técnicos ambientales*



**aLBriggs**  
ENVIRONMENTAL SOLUTIONS

**aQuamec**  
ENVIRONMENTAL SOLUTIONS